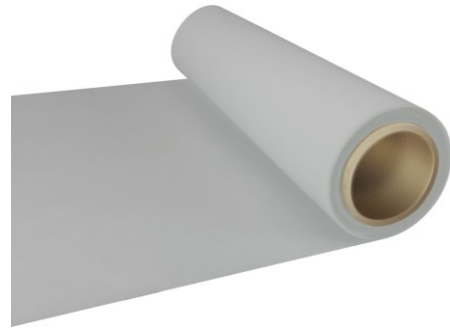


# SESD 282

## ESD mat

### ISO 10605:2023

- Dissipative mat according to ISO 10605:2003
- Thickness: 2 mm
- Surface resistance:  $10^7 \Omega$   
(not eligible for preference)
- Color: gray



Single piece: 60 x 91 cm,  
(color not binding)

**Rubber mats for ESD Test station**



### Overview

The mats are suitable for ESD test stations for immunity tests in accordance with ISO 10605:2023. The mats are characterized by their excellent ESD properties, special wear resistance and durability.

They are available as individual pieces in a size of 90 x 61 cm.

### Technical data

#### SESD 282

Material	two layer rubber
Color	gray
Dimensions (width x length)	appr. 60 x 91 cm
Thickness	2 mm

Surface resistance	$10^7 \Omega$
Weight	1.4 g/cm <sup>3</sup>
Abraison (load of 5 N)	130 mm <sup>3</sup>
Hardness	78 Shore A
Temperature application range	to 60 °C

All information regarding appearance and technical data correspond to the current state of development at the time of release of this data sheet. We reserve the right to make technical changes. 232109

